

Marble City Company

Natural Stone
Fabrication and Installation

Collection 2011

MARBLE CITY COMPANY



The right choice!

Phone: (650) 802-8189
Fax: (650) 802-0189
E-mail: info@marblecityca.com
<http://www.marblecityca.com>





Marble City Company is a leading company in the granite and marble market in Bay Area. The company offers a large selection of materials and finishes. We supply slabs of stone 1 1/4 inches thick (3cm), fabricate and install it to customer's satisfaction. We have more than 150 different colors and more than 1500 slabs of stone here on site. In this brochure we displayed just a few samples of color to give you some idea. Marble City specializes in creation of custom made kitchen countertops, vanities, fireplaces, stairs, and outdoor kitchens and barbeques, virtually anything which has to deal with stone, its fabrication and installation.

We import stone directly from all over the world—Brazil, Italy, Russia, India, Spain, Madagascar, Africa and from other countries and continents. We offer complete services on projects of any sizes and shapes. Marble City values its customers' trust, and hires only experienced workers within the company. All staff undergoes additional training no matter where they worked before, that way we insure the quality of the services we provide. At Marble City we use up-to-date equipment to reach the perfection of the projects we work on. We constantly perform research on new developments, strategies and other activities in the stone industry.

Marble City gives you the best turn around time. We work out the schedule with you and based on your needs. Our average turn-around time is 4-6 business days, some projects are done faster, some bigger projects may require more time up to 10 days maximum.

Marble City is located in San Carlos—the heart of the Bay Area, with an easy access from San Francisco, San Jose or East Bay.

Marble City is a Diamond certified company, which means that you can be confident in your selection knowing that our company is highly rated in ongoing customer satisfaction research.

At Marble City Company, we are able to make your dream come true – it is a right place to be!



MARBLE CITY COMPANY



Built to last!

Phone: (650) 802-8189
Fax: (650) 802-0189
E-mail: info@marblecityca.com
<http://www.marblecityca.com>





Our specialty is a thicker stone. Marble City Company is the only company who works with a thicker stone here in California, yet the 70% of the United States have already been using it for many good reasons. The stone we import is a 3cm (1 1/4 inches) thick, the stone mainly used in California is 2 cm (3/4 inches) thick.

Advantages of a thicker stone:

- With the 1 1/4 inches thick stone there is no seam on the final edge, showing a more sophisticated, better look. For a thinner stone to create a beautiful thick edge an additional piece of stone is glued to the countertop. The resulting seam has to be buffed, which adds up to the total cost of the countertop because of more labor, and a seam will always be a seam.
- If thinking about putting some granite outdoors one must remember not to use laminated edges, which are a necessity with a 3/4 inches thin stone. The ultraviolet light from the sun will breakdown the polyester resin in the seam and cause it to separate. It could take 1 year, or maybe even two, but it will happen. One way to avoid it is to use 1 1/4 inches thick stone.
- Under mount opening for the sink is the same thickness as is on the front edge, which gives a countertop as a whole a sophisticated look.
- The thicker stone is stronger than its thin 3/4 inches brother, so there is no need to support an overhang up to 12". When there are no supporting rails there is no bumping with your knees, and is safer for wandering toddlers.
- As the stone is stronger there is no need to put a plywood on top of cabinetry to support granite compare to 3/4", which makes it is less costly.



MARBLE CITY COMPANY



Fantastic Brown



Persa Gold



Summer White



Brecia-Oniciata



Honey

Phone: (650) 802-8189
Fax: (650) 802-0189
E-mail: info@marblecityca.com
<http://www.marblecityca.com>



MARBLE CITY COMPANY



Portionary



Blue Brazil



White Argento



Sienna Bordeaux



Madura Gold



Amadeus



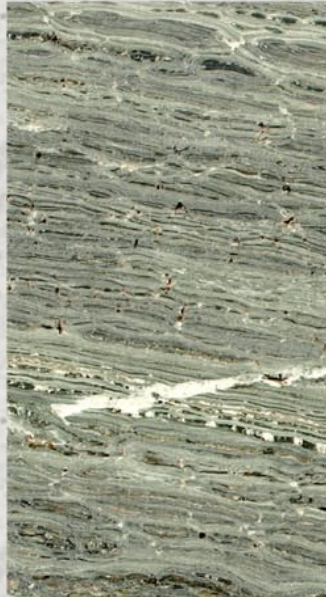
Bianco Romano

Phone: (650) 802-8189
Fax: (650) 802-0189
E-mail: info@marblecityca.com
<http://www.marblecityca.com>





Verde Fashion



Shamrock



Costa Smeraldo



Sea Foam Green



Pickcock Green



Namib Green



Labrodorite Multicolor



Golden Lighting Brashed

MARBLE CITY COMPANY



Golden Lighting



Emerald Green



Blue Brazil



Volga Blue



Matrix Brushed



Green Marinaci



Mettalic



Black Cosmic

Phone: (650) 802-8189
Fax: (650) 802-0189
E-mail: info@marblecityca.com
<http://www.marblecityca.com>





Black Forest Gold



Comet



Siena Bordeaux



Santa Cecilia



Botticino



Diano



Golden Sand



Solarius



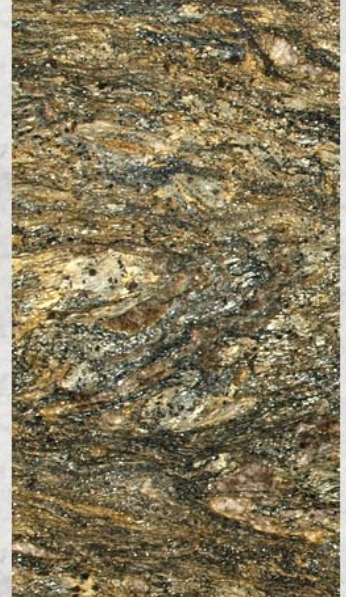
Capuccino



Luise Blue



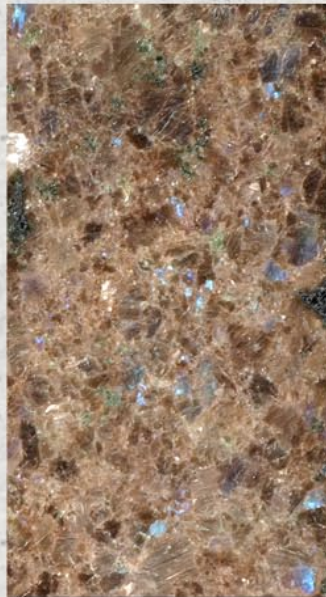
Blue Storm



Asterix



Bianco Antico



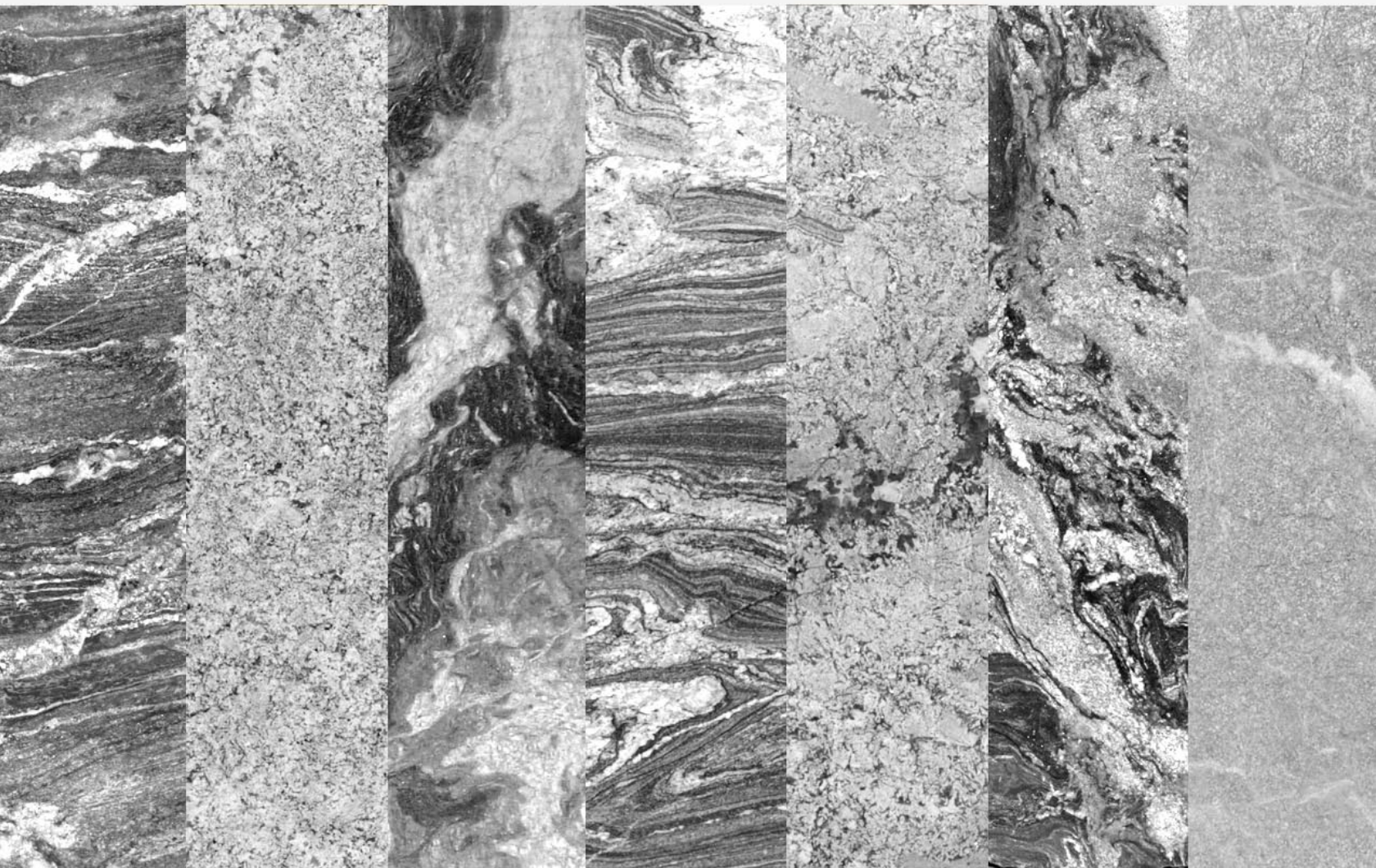
Labrador Antique



Bahia Taiphun



Red Dragon



Marble City Company

Natural Stone
Fabrication and Installation
Collection 2011

Our Address:

Marble City Company Inc.
611 Taylor Way Suite 6,
San Carlos CA 94070

Phone: (650) 802-8189

Fax: (650) 802-0189

E-mail: info@marblecityca.com
<http://www.marblecityca.com>